



IMMOBEL
since 1863

PRESS RELEASE

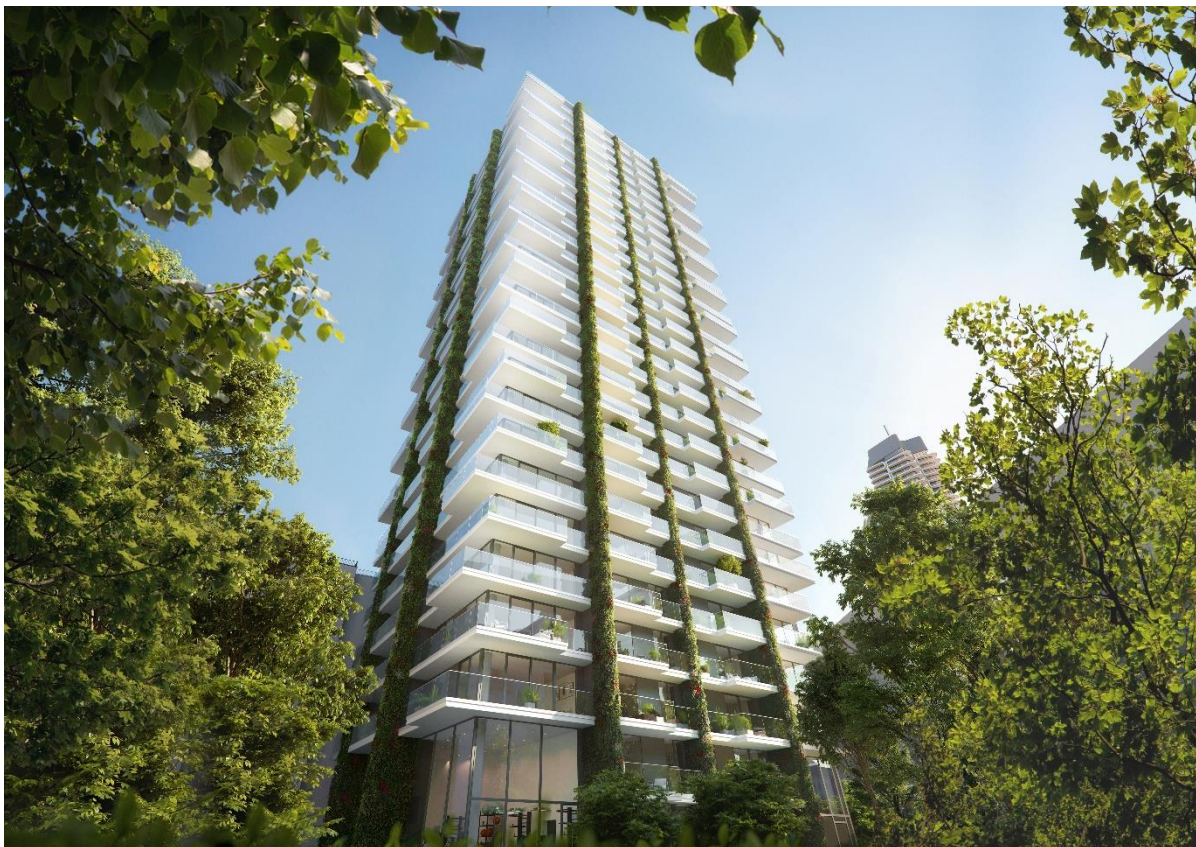
Non-regulated information

Brussels, December 3rd 2019 at 10.00 a.m.

The new Eden Tower brings plants back into the city of Frankfurt

185,000 plants to provide a unique green experience

Belgian developer ImmoBel has announced that the construction of the new Eden residential Tower in the European district of Frankfurt has begun. One of the specific characteristics of the project is its vertical vegetation concept. More than 20% of the façade of the building, some 98 metres in height, will be covered by 185,000 plants.



Copyright IMMOBEL© Eden



Previously a derelict site, now more than 2.5 times the ground area converted into green space

Designed by architectural bureau Helmut Jahn and Magnus Kaminiarz, thanks to its full height windows the building will offer both natural light and an omnipresent green environment to its residents. The plants, watered and nourished by a centralised system, will not require any specific care or attention from the residents. The façade vegetation will consist of 15 species of particularly robust plants, capable of permanent regeneration regardless of the height at which they are located.

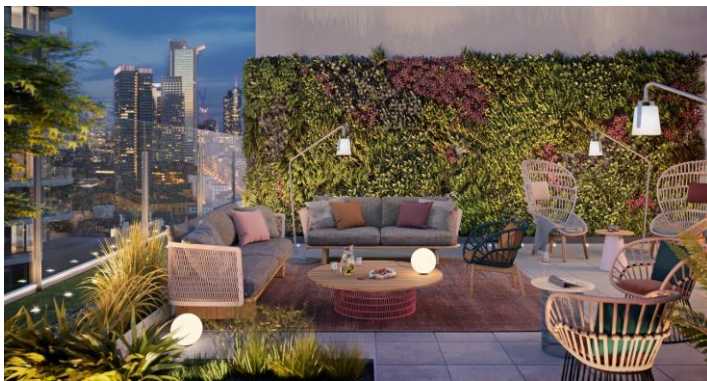
“Where there was formerly a car park and hundreds of cars occupying a space of more than 2,000 square metres, the Eden residential Tower will represent a vertical vegetal ecosystem equivalent to more than two and a half times its ground area,” states Olivier Bastin, CEO of ImmoBiel Luxembourg, in charge of the expansion of the group in Germany. *“Whereas over recent decades new constructions have mostly been replacing green areas in cities, we are doing exactly the opposite with the Eden Tower. We are bringing vegetation back to the city centre.”*

The Züblin group constructing the structure of the project

ImmoBiel has mandated the construction of the structure of the Eden Tower to Züblin. With a gross floor area of around 19,680 m², the new residential tower will provide 263 residential units. Along with three penthouses, Eden will mainly offer one to three bedroom apartments. The flexible concept of the project also provides the possibility of combining several units in order to arrive at larger apartments.

Characteristics of the Eden Tower

- Height: 98 metres, ground floor + 27 floors
- Parking : 100 spaces, common basement car park
- Gross floor area: 19.682 m²
- Residential units: 263 (bedsits of around 29 m², 2-bedroom of around 50 to 63 m², 3-bedroom of around 94 m², penthouses of 50 to 197 m²)
- Vertical facade vegetation:
- Creation of a new green area:
 - Around 2,000 m² of planted vegetation > 2.5 the ground area of the Eden Tower
 - More than 20 % of the facade planted
 - Number of plants: almost 185,000 specimens. Mix of more than 15 different plant species (coloured plants such as creeping Günsel or heart-leaved Bergenia, winter-green plants such as the Japanese sedge or crescent fern).
- Location: European district of Frankfurt
- Address: Europaallee 11, 60327 Frankfurt am Main
- Construction contractor: Ed. Züblin AG
- Marketing partners: Jones Lang LaSalle and Mattheußer Immobilien
- Website: <http://eden-frankfurt.com>
- Completion: End 2021, beginning 2022





For further details:

Wilhelm BRANDT, press contact Eden project

AGENTUR MARKENGUTHABEN

+49 069 15 62 96 24

brandt@markenguthaben.de

About IMMOBEL Group

IMMOBEL is the largest listed real estate developer in Belgium. Since it was founded in 1863, the Group has been developing and marketing innovative urban projects that respond to the needs of cities and their inhabitants. Thanks to its intelligent strategy and its 200 experts, IMMOBEL has managed to extend its expertise to the residential, office, commercial, mixed urban development, housing estate and hospitality sectors, reaching a market capitalisation of around €600 million, establishing it as a market leader. IMMOBEL is continuing its expansion across Europe with a portfolio of more than 1,000,000 sqm of developments in 6 countries (Belgium, the Grand Duchy of Luxembourg, Poland, France, Spain, Germany) and exercises its social responsibility by donating part of its profits to supporting charitable projects in the areas of Health, Culture and Social Inclusion. The Group is implementing a sustainable vision of urban development and is working to become a company conscious of its CO2 impact. For more information In Germany, ImmoBel is concentrating its activities on the office, residential and hotel sectors, along with the development of mixed use districts in principal and secondary cities.

For more information, please go to www.immobelgroup.com